

DC HIGH VOLTAGE EV RELAY

EVR250(NEW)



▶ **응용분야 (Application)** : Electric Vehicle, Charging System, Battery Energy Storage System
Solar System, Golf Car, Fuel Cell Vehicle, etc.

▶ **코일정격 (Magnet coil ratings)**

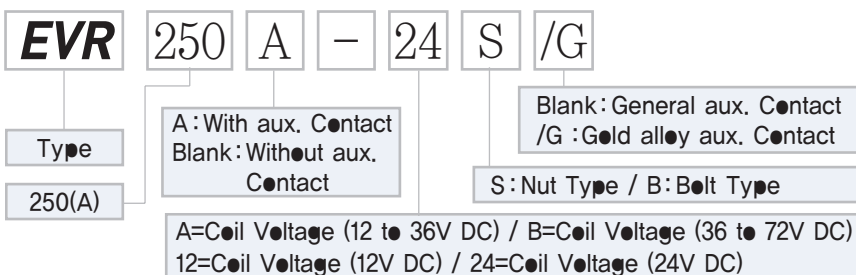
Nominal voltage(V)	Item	Inrush Coil current 100ms (Max.)	Holding Coil current (mA)	Pick-up voltage (V)Max.	Drop-out voltage (V)Min.	Holding voltage (V)Min.	Max. voltage (V)Max.
B	72	1.3A	0.05~0.12A	32VDC	18VDC	22VDC	95VDC
	60						
	36						
A	36	2.4A	0.09A	9VDC	6VDC	7.5VDC	36VDC
	24	2.4A	0.14A				
	12	2.4A	0.29A				
12		2.4A	0.29A	9VDC	6VDC	7.5VDC	18VDC
24		1.3A	0.17A	18VDC	12VDC	13.5VDC	32VDC

Notes : 1. Nominal current and coil resistance are measured at +20°C. 2. Differences of coil resistance are ±10%. 3. Performance characteristic coil temperature is measured at +20°C.

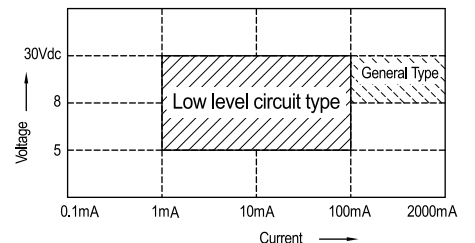
▶ **접점정격 (Contact ratings)**

Item	Type	1Pole Resistive load (L/R≤1ms)
		EVR250
Max. Continuous current (wire size 300mm ²)		500A
Max. switching current		250A
Max. switching capacity at max. voltages		900VDC 200A
Contact rating switching voltages		12~1200VDC
Max. cut-off current		600VDC 1000A 3 Ops / 400VDC 1500A 2 Ops
C-R load (charging)		500V 1500A 4,000 Ops / 500V 500A 30,000 Ops
Voltage drop across contacts per 100A		30mV Max.
Min. permissible load		12V DC 0.5A
Description		S,P On/Off (a)
Contact Arrangement, auxiliary contacts		1Form A (SPST-NO.)
General Aux. Contact Current, Max.		2A 30VDC / 3A 125VAC
General Aux. Contact Current, Min.		100mA 8VDC
Gold alloy Aux. Contacts Max.		0.1A 30VDC / 0.1A 30VAC
Gold alloy Aux. Contacts Min.		1mA 5VDC / 1mA 5VAC

▶ **주문방법 (Ordering information)**



Permissible load of Aux. contact



DC HIGH VOLTAGE EV RELAY

EVR250(NEW)



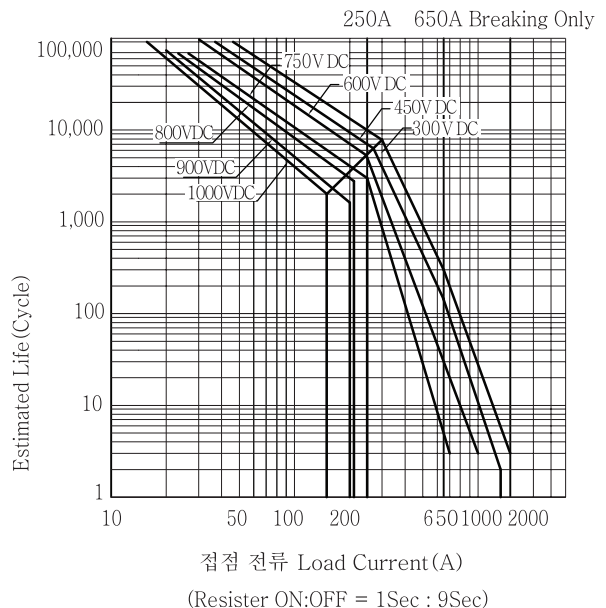
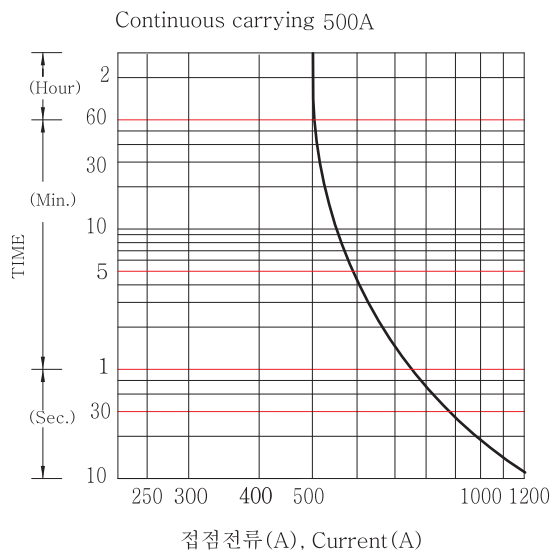
EVR250

▶ 성능 (Characteristics)

Expected life	Mechanical (Min.)		2×10^6
	Electric (Min.) (L/R ≤ 1ms)	450V DC 250A	7×10^3
		750V DC 250A	3×10^3
Initial insulation resistance			Min. 100MΩ 500V DC
Initial breakdown voltage	Between open contacts		4000V AC 60 Sec. 5mA
	Between contacts & coil		4000V AC 60 Sec. 5mA
Operate time (at 20°C)			Max. 30ms
Release time (at 20°C)			Max. 10ms
Shock resistance	Functional		Min 196 % {20G}
	Destructive		Min 490 % {50G}
Vibration resistance	Functional		100 % {20G} 80 to 2000Hz
	Destructive		100 % {20G} 80 to 2000Hz
Conditions for operation transport and storage	Ambient temperature		-40°C to +85°C
	Humidity		5 to 85% R.H.
Unit weight			460g

▶ 특성곡선 (Reference data)

- 온도상승곡선
- 통전시간의 최대치 Max, Current capacity
Max, Continuous thermal current rating (amperes)
- 전기적 수명 곡선
(Estimated Switching Ratings)



DC HIGH VOLTAGE EV RELAY

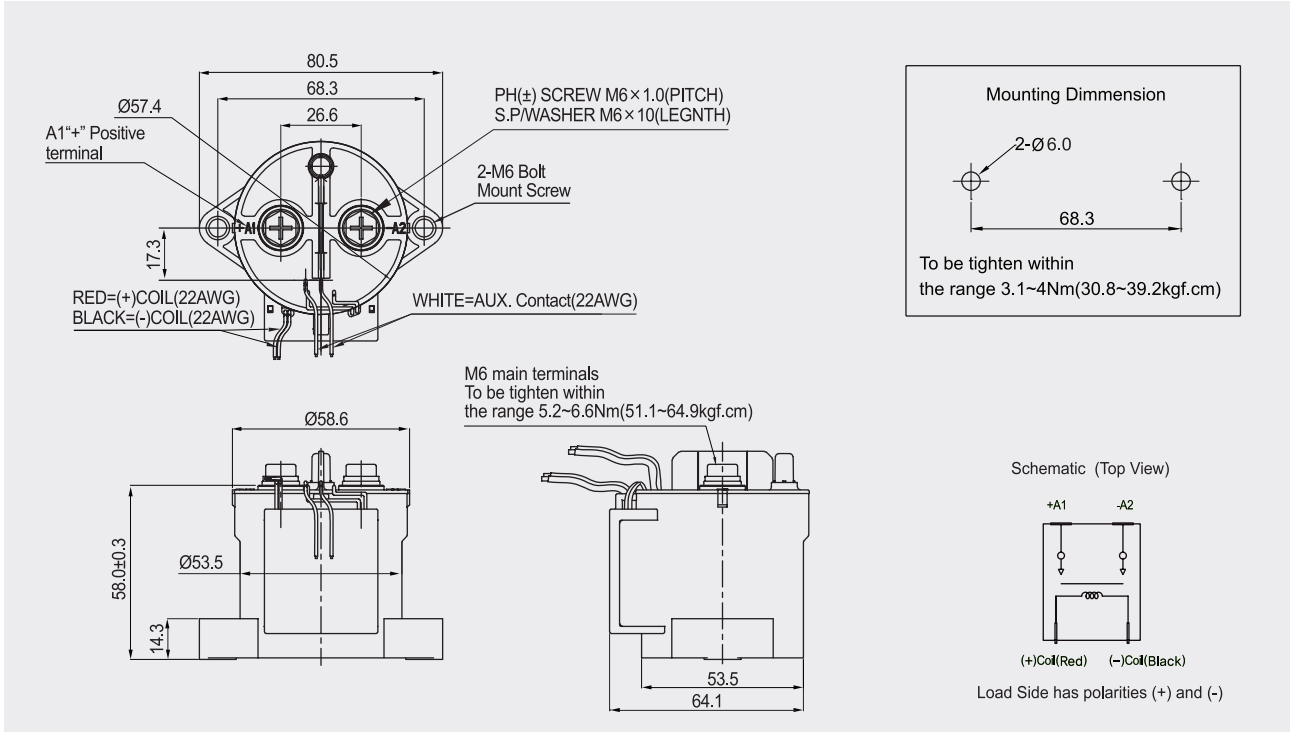
EVR250(NEW)



공차 (Tolerance) : 10mm 이하 ±0.3, 10~50mm ±0.6, 50mm 이상 ±1.0

▶ 외형치수도 (Dimension in mm)

(Nut Type)



(Bolt Type)

