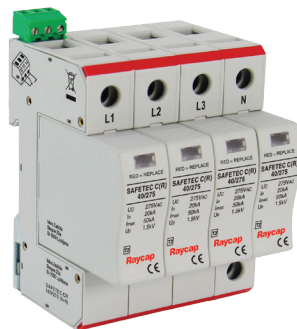


Modular Multi-pole SPD **SafeTec C(R) (4+0)** Class II • Type 2



Location of Use: Sub-distribution Boards
Network Systems: TN-S
Mode of Protection: L - PE, N - PE
Surge Ratings: $I_n =$ up to 20 kA (8/20 μ s)
 $I_{max} =$ up to 50 kA (8/20 μ s)
IEC/EN Category: Class II / Type 2
Protective Elements: High Energy MOV and GDT
Safety: TOV Withstand
Housing: Modular Design
Compliance: IEC 61643-11:2011
 EN 61643-11:2012

Technical Data

SafeTec C(R) yyy/xxx (4+0)

150 275 385 440 750 880

Electrical

Nominal AC Voltage (50/60 Hz)	U_o	120V	230V	230V	230V	400V	400V
Maximum Continuous Operating Voltage (AC)	U_c	150V	275V	385V	440V	750V	880V
Nominal Discharge Current (8/20 μ s)	I_n	20 kA	20 kA	20 kA	20 kA	12.5 kA	12.5 kA
Maximum Discharge Current (8/20 μ s)	I_{max}	50 kA	50 kA	50 kA	50 kA	25 kA	25 kA
Voltage Protection Level	U_p	< 1.1 kV	< 1.5 kV	< 2.2 kV	< 2.3 kV	< 2.8 kV	< 3.0 kV
Response Time	t_A	< 25 ns					
Back-Up Fuse (if mains > 125 A)		125 A gG					
Short-Circuit Current Rating (AC)	I_{SCCR}	25 kA					
TOV withstand 5s	U_T	228V	438V	520V	594V	1000V	1100V
Number of Ports		1					

Mechanical & Environmental

Temperature Range	T_a	-40 °C to +85 °C					
Permissible Humidity	RH	5%...95%					
Terminal Screw Torque	M_{max}	3.0 Nm					
Conductor Cross Section (max)		35 mm ² (solid) / 25 mm ² (stranded)					
Mounting		35 mm DIN Rail, EN 60715					
Degree of Protection		IP 20					
Housing Material		Thermoplastic: Extinguishing Degree UL 94 V-0					
Thermal Protection		Yes					
Fault Indication		Red Flag					
Remote Contacts (RC)		Optional					
RC Switching Capacity		AC: 250V/0.5A; 125V/3A					
RC Terminal Cross Section (max)		1.5 mm ²					
RC Terminal Screw Torque	M_{max}	0.25 Nm					

Order Information

Order Code	150	275	385	440	750	880
SAFETEC C 160/xxx (4+0)	516.898	516.899	516.900	516.901		
SAFETEC CR 160/xxx (4+0) (with remote contacts)	516.904	516.905	516.906	516.907		
SAFETEC C 100/xxx (4+0)*					516.902	516.A73
SAFETEC CR 100/xxx (4+0) (with remote contacts)*					516.908	516.A74
Module SAFETEC C(R) 40/xxx	516.866	516.867	516.868	516.869		
Module SAFETEC C(R) 25/xxx*					516.870	516.A68

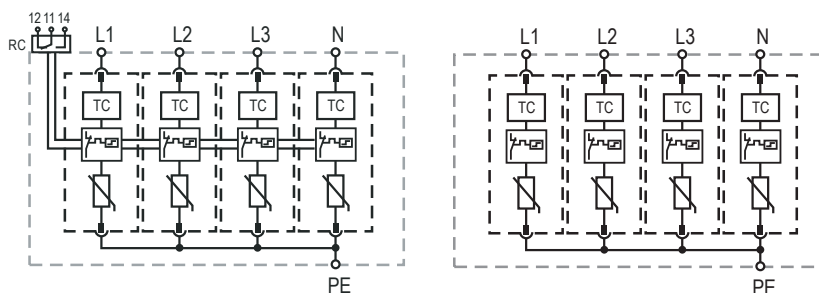
*Product also available with UL certification.

SafeTec C(R) (4+0)

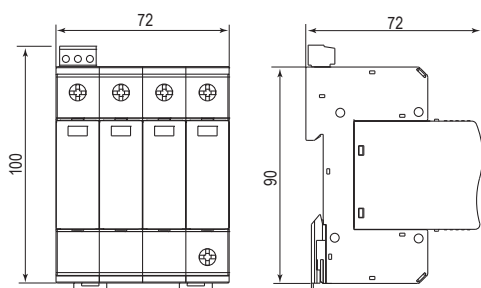
Internal Configuration

Legend

- L Line
- N Neutral
- PE Protective Earth
- RC Remote Contacts Optional
- TC Thermal Control Function



Dimensions & Packaging [mm]

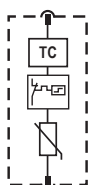


Dimensions & Packaging

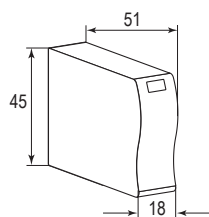
Dimensions & Packaging					
SafeTec C 160/xxx (4+0)	150	275	385	440	
Single Unit Weight	560 g	562 g	595 g	598 g	
SafeTec C 100/xxx (4+0)					750 880
Single Unit Weight					602 g 602 g
SafeTec CR 160/xxx (4+0)	150	275	385	440	
Single Unit Weight	568 g	570 g	603 g	606 g	
SafeTec CR 100/xxx (4+0)					750 880
Single Unit Weight					610 g 610 g
Single Unit DIN 43880 Dimension	4 TE				
Packaging Dimensions (H x W x L)	109 x 77 x 80 mm				
Minimum Order Quantity	3 Units				

Module Internal Configuration

Module SafeTec C(R) yy/xxx



Dimensions & Packaging [mm]



Dimensions & Packaging

Dimensions & Packaging					
Module SafeTec C(R) 40/xxx	150	275	385	440	
Single Unit Weight	62 g	66 g	72 g	74 g	
Module SafeTec C(R) 25/xxx					750 880
Single Unit Weight					78 g 78 g
Single Unit DIN 43880 Dimension	1 TE				
Packaging Dimensions (H x W x L)	98 x 77 x 110 mm				
Minimum Order Quantity	12 Units				