

Overvoltage Protection

ProTec T2 4+0

Class II • Type 2 • Type 1CA



Location of Use: Sub-Distribution Boards
 Network Systems: TN-S
 Mode of Protection: L-PE, N-PE
 IEC/EN/UL Category: Class II / Type 2 / Type 1CA
 Housing: Pluggable Design
 Compliance: IEC 61643-11:2011
 EN 61643-11:2012
 UL 1449 4th Edition

Technical Data

ProTec T2-xxx-4+0(-R)	150	300	350	480	550*	
IEC Electrical						
Nominal AC Voltage (50/60Hz)	U_o/U_n	120V	240V	277V	400V	480V
Maximum Continuous Operating Voltage (AC)	U_c	150V	300V	350V	480V	550V
Nominal Discharge Current (8/20 μ s)	I_n	20 kA	20 kA	20 kA	20 kA	20 kA
Maximum Discharge Current (8/20 μ s)	I_{max}	50 kA	50 kA	50 kA	50 kA	50 kA
Voltage Protection Level	U_p	1250V	1500V	1750V	2300V	2500V
Response Time	t_A	< 25 ns				
Overcurrent Protection (max)		315 A / 250 A gG				
Short-Circuit Current Rating (AC)	I_{SCCR}	25 kA / 50 kA				
TOV Withstand 5s	U_T	229V	337V	403V	581V	697V
TOV 120min	U_T	229V	442V	529V	762V	915V
	mode	Withstand	Safe Fail	Safe Fail	Safe Fail	Safe Fail
Number of Ports		1				
UL Electrical						
Maximum Continuous Operating Voltage (AC)	MCOV	150V	300V	350V	480V	550V
Voltage Protection Rating	VPR	600V	900V	1000V	1500V	2000V
Nominal Discharge Current (8/20 μ s)	I_n	20 kA	20 kA	20 kA	20 kA	20 kA
Short-Circuit Current Rating (AC)	SCCR	200 kA	150 kA	200 kA	200 kA	200 kA
Mechanical & Environmental						
Operating Temperature Range	T_a	-40 °F to +185 °F [-40 °C to +85 °C]				
Permissible Operating Humidity	RH	5%...95%				
Altitude (max)		13123 ft [4000m]				
Terminal Screw Torque	M_{max}	39.9 lbf-in [4.5Nm]				
Conductor Cross Section (max)		2 AWG (Solid, Stranded) / 4 AWG (Flexible) 35 mm ² (Solid, Stranded) / 25 mm ² (Flexible)				
Mounting		35 mm DIN Rail, EN 60715				
Degree of Protection		IP 20 (built-in)				
Housing Material		Thermoplastic: Extinguishing Degree UL 94 V-0				
Thermal Protection		Yes				
Operating State / Fault Indication		Green Flag / Not Green Flag				
Remote Contacts (RC)		Optional				
RC Switching Capacity		AC: 250V/1A, 125V/1A; DC: 48V/0.5A, 24V/0.5A, 12V/0.5A				
RC Conductor Cross Section (max)		16 AWG (Solid) / 1.5 mm ² (Solid)				
Order Information						
Order Code		150	300	350	480	550*
ProTec T2-xxx-4+0		59.0101	59.0103	59.0300	59.0105	59.0683
ProTec T2-xxx-4+0-R (with remote contacts)		59.0102	59.0104	59.0301	59.0106	59.0684
ProTec T2-xxx-P (plug)		59.0064	59.0065	59.0066	59.0067	59.0685

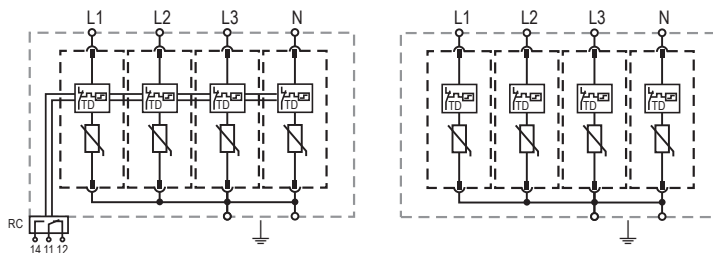
*UL listed, no IEC/EN certification.

ProTec T2 4+0

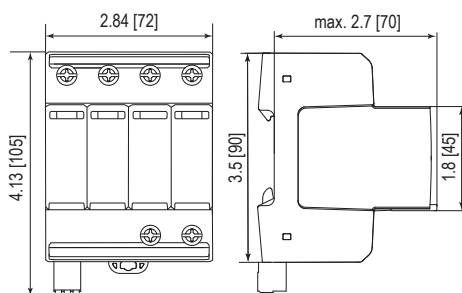
Internal Configuration

Legend

- L Line Conductor Terminal
- N Neutral Conductor Terminal
- PE/G Conductor Terminal
- RC Remote Contacts Terminal (Optional)
- TD Thermal Disconnect



Complete Unit

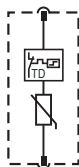


Complete Unit Dimensions & Packaging

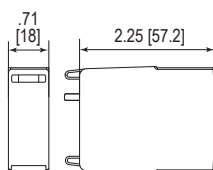
		150	300	350	480	550*
ProTec T2-xxx-4+0	Weight	pounds .989	1.015	1.059	1.112	1.208
		grams 448	460	480	504	548
ProTec T2-xxx-4+0-R						
Weight	pounds	1.008	1.035	1.079	1.132	1.228
	grams	457	469	489	513	557
DIN 43880 Dimension		4 TE / 2.84" [72]				
Packaging Dimensions (HxWxL)		4.3 x 4.5 x 13.8" [109 x 115 x 352 mm]				
Standard Order Quantity		4 Units				

Plug Internal Configuration

ProTec T2-xxx-P



Spare Plug



Single Unit Dimensions & Packaging

		150	300	350	480	550*
ProTec T2-xxx-P	Weight	pounds .123	.130	.141	.154	.163
		grams 56	59	64	70	74
DIN 43880 Dimension		1 TE / .71" [18]				
Packaging Dimensions (HxWxL)		3.2 x 4.5 x 12" [83 x 115 x 305 mm]				
Standard Order Quantity		24 Units				

inches
[mm]