

AC Indoor/Outdoor Combination SPD Enclosures
ProFilt PSF Series
 Class I • Class II • Type 1 • Type 2

Single Phase



Location of Use: Close Proximity to Protected Equipment
 Network Systems: TT
 Mode of Protection: L - N, N - PE
 Surge Ratings: $I_{imp} = 25 \text{ kA}$ (10/350 μs)
 $I_L = 40 \text{ A}$
 $I_{max} = 100 \text{ kA}$ (8/20 μs)
 IEC/EN Category: Class I, II/Type 1, 2
 Protective Elements: High Energy MOV, GDT and Surge Filter
 Housing: Steel Enclosure
 Compliance: IEC 61643-11:2011
 EN 61643-11:2012

Technical Data

ProFilt PSF Series 1/40 /440 / TT -25 kA

40

Electrical

Nominal AC Voltage (50/60 Hz)	U_o	220 - 240 V
Maximum Continuous Operating AC Voltage	U_c	440 V
Maximum Load Current	I_L	40 A
Maximum Discharge Current (8/20 μs)	(L - N)/(N - PE) I_{max}	100 kA/ 100 kA
Impulse Current (10/350 μs)	(L - N)/(N - PE) I_{imp}	25 kA/ 50 kA
Voltage Protection Level at 3 kA (8/20 μs)	U_p	< 600 V
Maximum Voltage Drop	ΔU	< 1%
Filtering		-40 dB @ 50 kHz
Circuit breaker (P+N)		40 A
Rated short-circuit breaking capability		10 kA

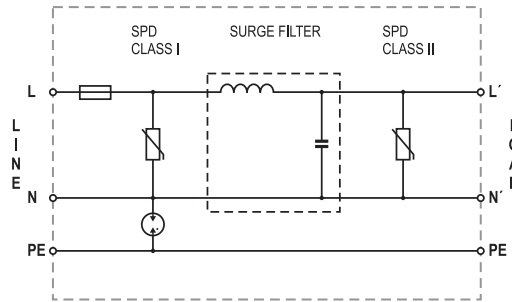
Mechanical & Environmental

Temperature Range	T_a	-40 °C to +85 °C
Permissible Humidity	RH	5%...95%
Mounting		Wall Mount
Degree of Protection		IP 65
Housing Material		Metal
Thermal Protection		Yes
SPD Fault Indication		Red Flag
Terminal Cross Section		INPUT/OUTPUT 16 mm ²
Remote Contact Terminals Cross Section		2.5 mm ²

Order Information

Single Phase	40
ProFilt PSF 1/40/440/ TT -25 kA	130 146

Internal Configuration

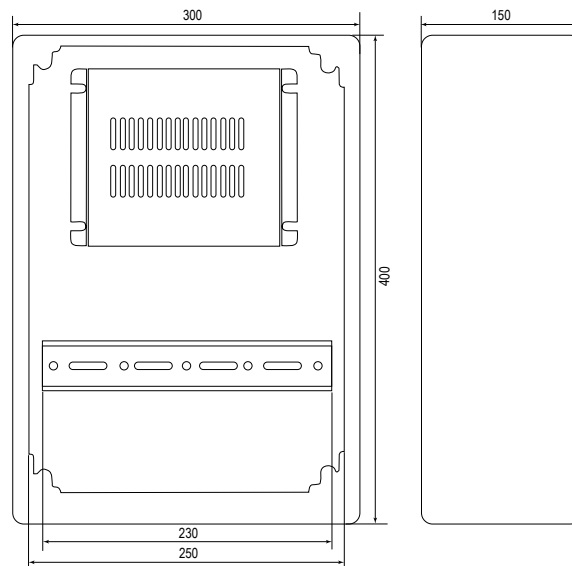


Legend

- L Line
- N Neutral
- PE Protective Earth

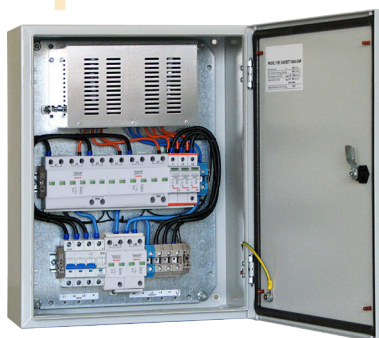
Dimensions & Packaging [mm]

Dimensions & Packaging	
ProFilt PSF 1/40/440 / TT-25 kA	40
Single Unit Weight	8 kg
Single Unit Dimension (H x W x L)	400 x 150 x 300 mm
Minimum Order Quantity	1 Units



AC Indoor/Outdoor Combination SPD Enclosures
ProFilt PSF Series
 Class I • Class II • Type 1 • Type 2

Three Phase



Location of Use: Close Proximity to Protected Equipment
 Network Systems: TT
 Mode of Protection: L - N, N - PE
 Surge Ratings: $I_{imp} = 25 \text{ kA (10/350 } \mu\text{s)}$
 $I_L = 40 \text{ A}$
 $I_{max} = 100 \text{ kA (8/20 } \mu\text{s)}$
 IEC/EN Category: Class I, II/Type 1, 2
 Protective Elements: High Energy MOV, GDT and Surge Filter
 Housing: Steel Enclosure
 Compliance: IEC 61643-11:2011
 EN 61643-11:2012

Technical Data

ProFilt PSF Series 3 / 40 / 440 / TT - 25 kA

40

Electrical

Nominal AC Voltage (50/60 Hz)	U_o	220 - 240V
Maximum Continuous Operating AC Voltage	U_c	440V
Maximum Load Current	I_L	40A
Maximum Discharge Current (8/20 μ s)	(L - N)/(N - PE) I_{max}	100 kA/100 kA
Impulse Current (10/350 μ s)	(L - N)/(N - PE) I_{imp}	25 kA/100 kA
Voltage Protection Level at 3kA (8/20 μ s)	U_p	< 600V
Maximum Voltage Drop	ΔU	< 1%
Filtering		-40 dB @ 50 kHz
Circuit breaker (3P+N)		40A
Rated short-circuit breaking capability		10 kA

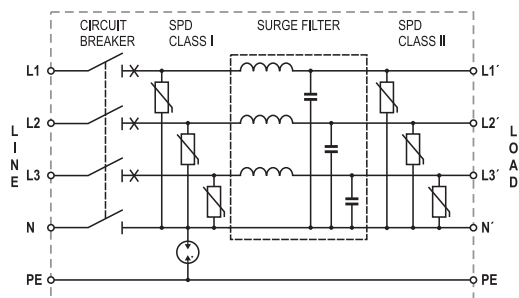
Mechanical & Environmental

Temperature Range	T_a	-40 °C to +85 °C
Permissible Humidity	RH	5%...95%
Mounting		Wall Mount
Degree of Protection		IP 65
Housing Material		Metal
Thermal Protection		Yes
SPD Fault Indication		Red Flag
Terminal Cross Section		INPUT/OUTPUT 35 mm ²
Remote Contact Terminals Cross Section		2.5 mm ²

Order Information

Three Phase		40
ProFilt PSF 3/40/440/TT - 25 kA		130 147

Internal Configuration



Legend

- L Line
- N Neutral
- PE Protective Earth

Dimensions & Packaging [mm]

Dimensions & Packaging	
ProFit PSF 3/40/440 / TT -25 kA	40
Single Unit Weight	18 kg
Single Unit Dimension (H x W x L)	500 x 200 x 400 mm
Minimum Order Quantity	1 Units

